

Imperfast Fasteners Termination Bars are designed to be used with BITEC StrongHold™ single ply membranes, as well as BITEC's line of bituminous roofing systems.

### FEATURES & BENEFITS

BITEC Imperfast Fasteners termination bars are made of 6063-T6 extruded aluminum with holes placed on 6-inch centers. Each type can be trimmed using metal shears to accommodate project-specific dimensions.

Factory Mutual and Florida Building Code approved.

### STORAGE & HANDLING

Store termination bars in original containers and protected from the weather. Avoid bending.

### INSTALLATION

Unless otherwise specified, BITEC recommends following the 6-inch fastener spacing inherent in the termination bar design. Apply BITEC StrongHold Single Ply Sealant or Elastopav® Sealant for components fabricated with receiver lips. NOTE: BITEC standardly specifies surface-mounted or reglet counterflashing to be installed above exposed termination bar details. Please contact your local BITEC Technical Manager to review any deviations from BITEC standard specifications and details.

### PRECAUTIONS

Eye protection must always be worn while installing and handling termination bars. Dispose of scrap material appropriately and always use caution handling cut metal edges to avoid personal injury.

Safety first! Read all label information, SDS, and precautions before using. For safety information on our products, please visit [www.bitec.com](http://www.bitec.com).

### SIZES AND PACKAGING

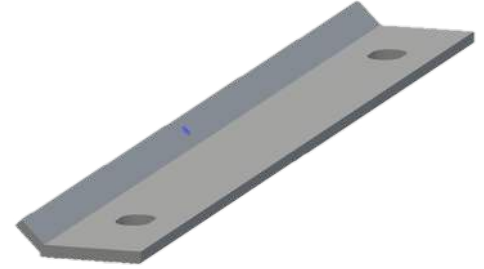
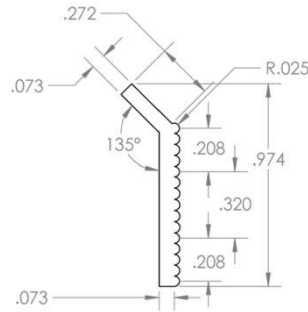
Bar Style	Width	Length	Pieces per Tube	Weight per Tube	Tubes per Pallet
1" Single Lip 135	1" (25.4 mm)	10' (3.05 m)	50	66 lbs	48
1" Flat Ribbed	1" (25.4 mm)	10' (3.05 m)	50	69 lbs	48

*All information is given in good faith but normal tolerances of manufacture and testing will apply. BITEC reserves the right to improve and change its products at any time without prior notice or advice. The use of BITEC products is determined by local conditions and individual requirements of each contract. In consideration of the many factors involved, BITEC cannot be held responsible for the improper application of its products and for conditions beyond its control. All claims filed against BITEC warranties will be subject to the provisions set forth at the date of the warranty issuance, and any addendum thereto. Under no circumstances will BITEC be held liable for any damage, whether personal injury or property damage, which occur during or after the application of any BITEC products.*

### PHYSICAL / MECHANICAL PROPERTIES

#### 1" Single Lip 135

Thickness	0.073" / 0.098" (1.9 mm / 2.5 mm)
Width	1" (25.4 mm)
Weight	1.2 lbs (0.5 kg)



#### 1" Flat Ribbed

Thickness	0.089" / 0.114" (2.3 mm / 2.9 mm)
Width	1" (25.4 mm)
Weight	1.3 lbs (0.6 kg)

