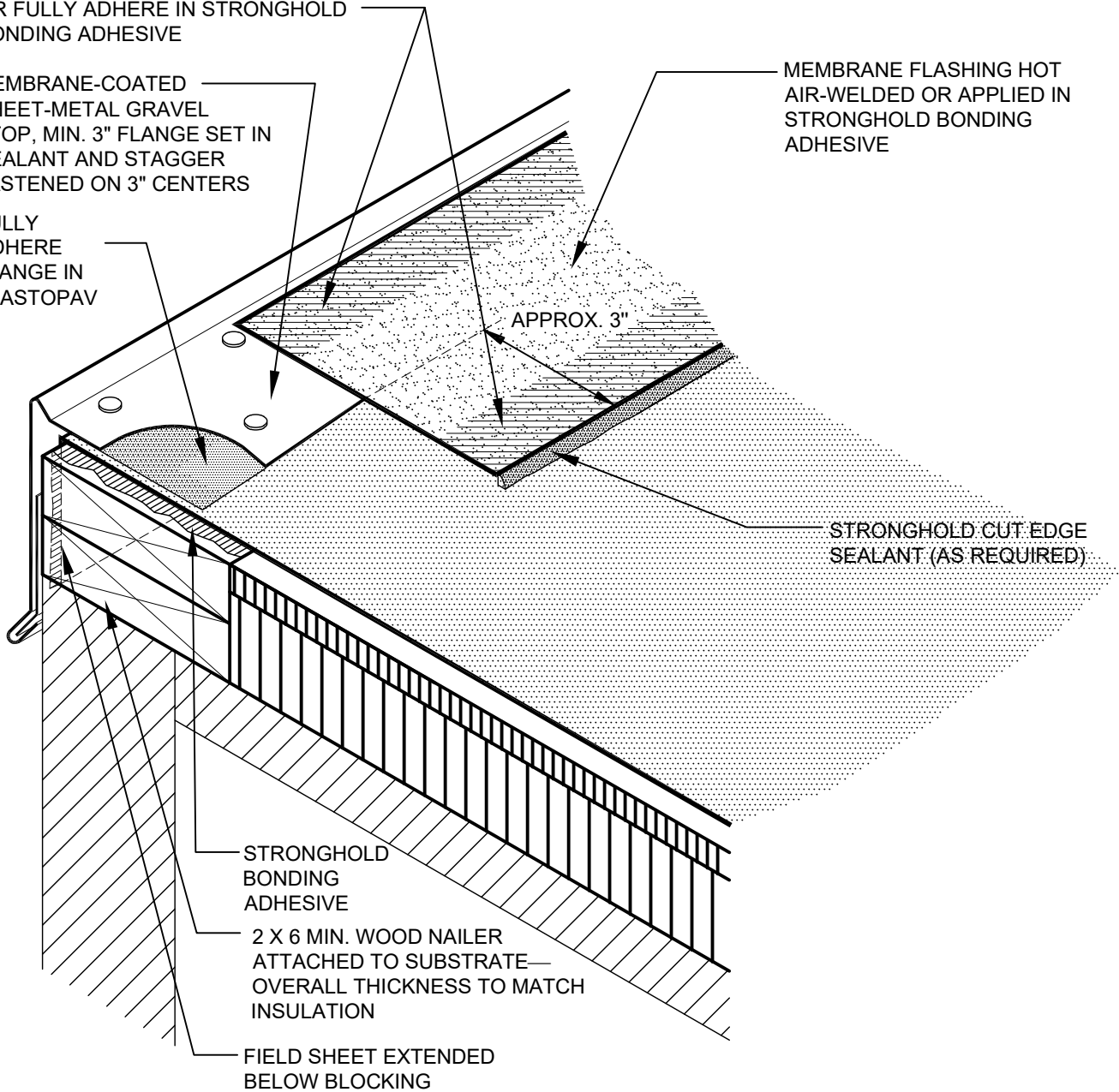


HOT-AIR-WELDED SEAM
OR FULLY ADHERE IN STRONGHOLD
BONDING ADHESIVE

MEMBRANE-COATED
SHEET-METAL GRAVEL
STOP, MIN. 3" FLANGE SET IN
SEALANT AND STAGGER
FASTENED ON 3" CENTERS

FULLY
ADHERE
FLANGE IN
ELASTOPAV

MEMBRANE FLASHING HOT
AIR-WELDED OR APPLIED IN
STRONGHOLD BONDING
ADHESIVE



NOTES:

1. REFER TO BITEC SPECIFICATIONS FOR REQUIREMENTS FOR ROOF MEMBRANE ATTACHMENT.
2. REFER TO THE ARCHITECTURAL METAL FLASHING SECTION OF THE NRCA ROOFING MANUAL: ARCHITECTURAL METAL FLASHING AND CONDENSATION AND AIR LEAKAGE CONTROL FOR DESIGN AND SECUREMENT OPTIONS FOR GRAVEL STOPS.

STRONGHOLD™

FLANGED ROOF EDGE FLASHING

#2 Industrial Park Drive · PO Box 497 · Morrilton, AR 72110
Customer Service: (800) 535-8597 · Fax: (501) 354-3019 · www.bitec.com

BITEC®
WHEN QUALITY MATTERS™

NOT DRAWN TO SCALE

REFERENCE: SH-E-F

Rev. 11/2025 © BITEC, Inc.